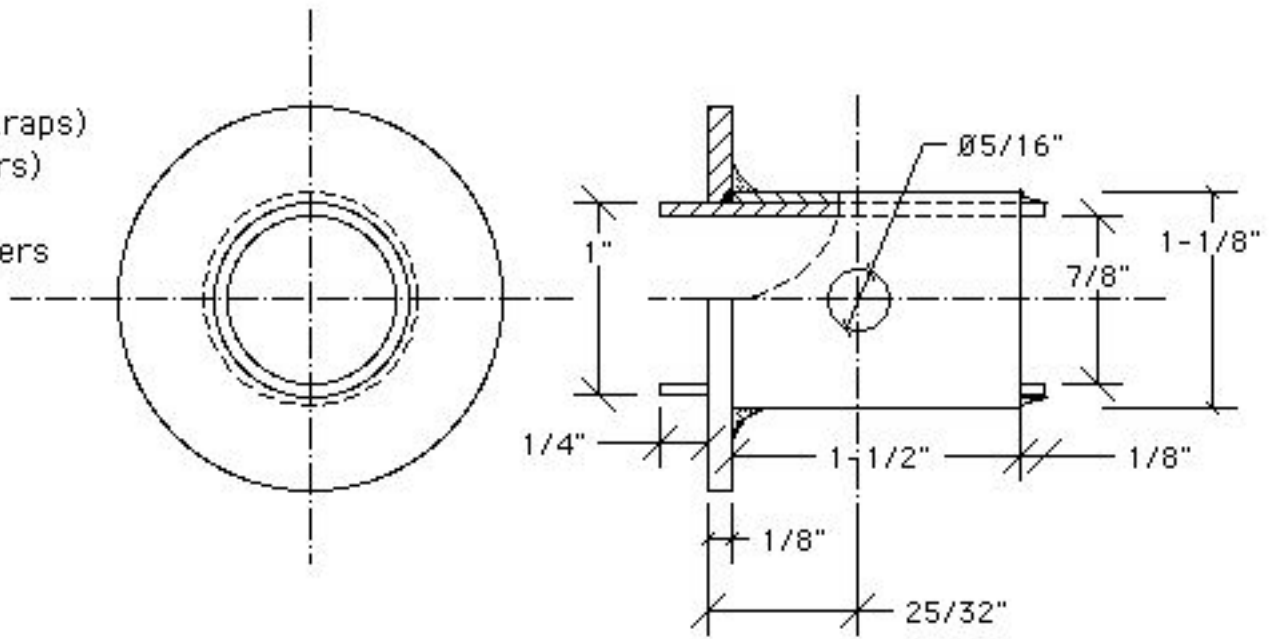


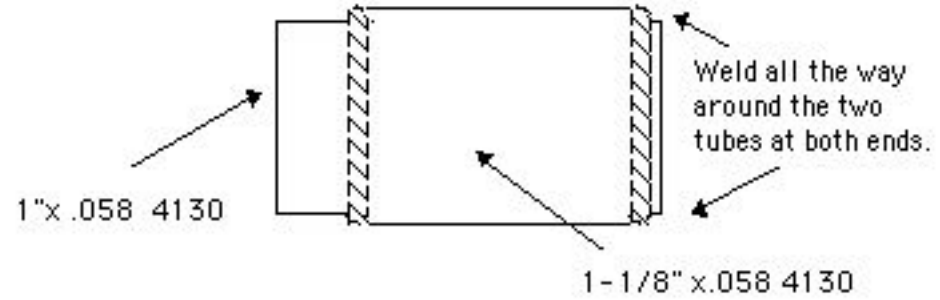
**Material list for die spring shock absorber assembly**

- 2 Danley 9-3224-36 die springs
- 1 6" x 3/4" .065 4130 tube
- 2 30" x 7/8" x .058 4130 tube (will vary with application)
- 1 6" x 1" .058 4130 tube
- 1 6" x 1-1/8" 4130 tube
- 1 12" 1/2" .065 (for bushings)
- 1 6" x 6" .060 4130 sheet (for finger straps)
- 1 6" x 6" x 1/8" 4130 sheet (for washers)
- 4 2" x 1/8" washers (sub for above)
- 4 AN5 bolts with proper nuts and washers

# COLLAR ASSEMBLY



**NOTE:** These drawings are suggestions only and not intended to be considered engineered as air worthy in any way. Builder responsible for determining safe application of any of this information.



Weld inner and outer tubes together first as shown above. Bevel inner edge of washer then weld into position shown above. The 1/4" of the inner tube past the washer establishes the lip for spring to center on.