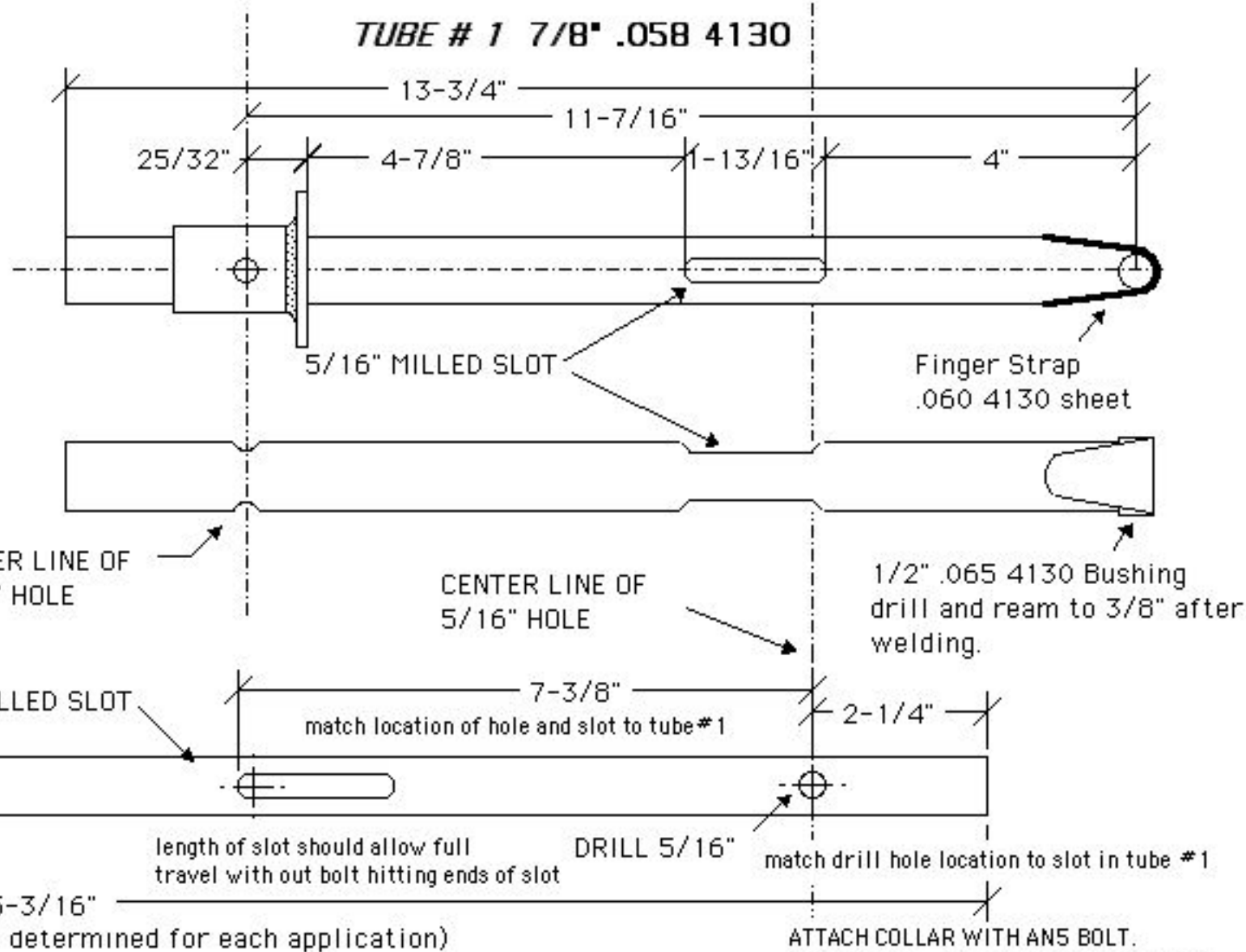


**DIE SPRINGS SHOCK ABSORBER ASSEMBLY
TYPICAL FOR CUB TYPE AIRCRAFT.
LENGTH OF TUBE #2 TO BE
DETERMINED FOR EACH AIRCRAFT**

NOTE: These drawings are suggestions only and not intended to be considered engineered as airworthy in any way. Builder responsible for determining safe application of any of this information.



Ream inside of Tube #1
to slip fit with TUBE #2

USE AN5 BOLT

1/16" HARD RUBBER
OR PLASTIC WASHER

ATTACH COLLAR WITH AN5 BOLT.
SPRING WILL NEED TO BE COMPRESSED
SOME TO ALIGN BOLT HOLES AND SLOT.
(PRELOAD)

When assembled the spring is compressed 1/4". Assembled length with spring installed is 29-5/16" from center of bushings. This will have the wheels canted to take into account loaded aircraft weight.